

# IICAPS Performance Improvement

Beacon Health Options and Yale Child Study Center  
Child & Adolescent Quality, Access & Policy Committee

June 15, 2016

# Background

- Previous Evaluations Demonstrated that IICAPS
  - Is effective at reducing hospital admissions and days in the hospital during and following IICAPS treatment
  - Is effective at reducing emergency department visits during and following IICAPS treatment
  - There is variability across IICAPS providers in their performance on key metrics
  - There is room for improvement in the following areas
    - Connection to Follow-up Care within 30 days of an IICAPS Discharge
    - Filling a prescription within 45 days of an IICAPS Discharge (for those on medications at discharge)
    - Avoiding Hospitalization in the 180 days following an IICAPS episode

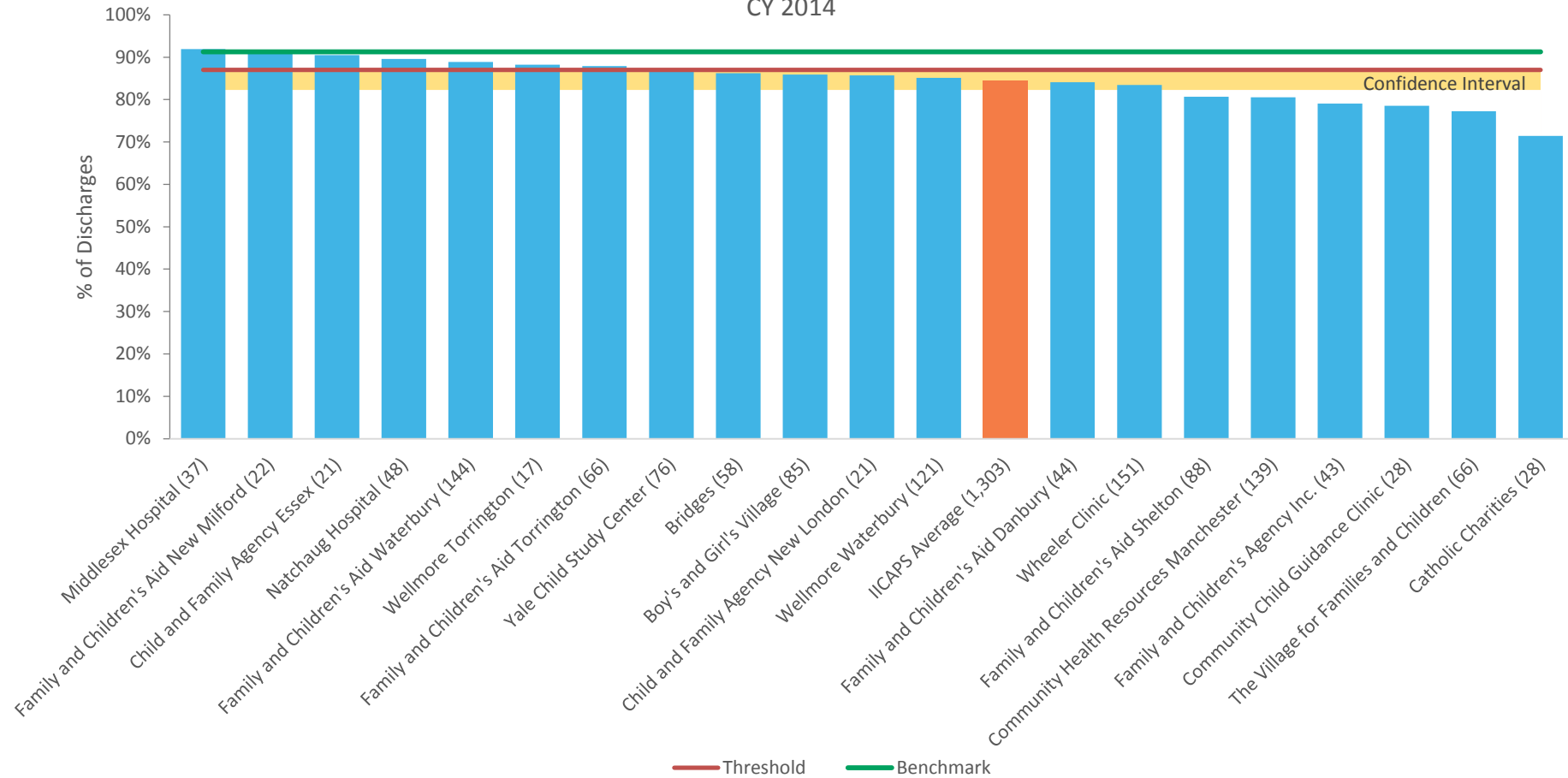
# Quality Improvement Approach

- Track the three measures outlined above for a series of rolling 12 month periods
- Report findings every six months
- Establish a **Benchmark** and a **Threshold** for each measure
  - **Benchmark** – following the lead of National Committee for Quality Assurance (NCQA) establish the highest level of performance attained
    - = the average of the top three performers for that measure during that time period
- **Threshold** for Expected Performance
  - Selection of an **attainable performance goal that is higher than the current statewide average but lower than the Benchmark**

# Quality Improvement Approach

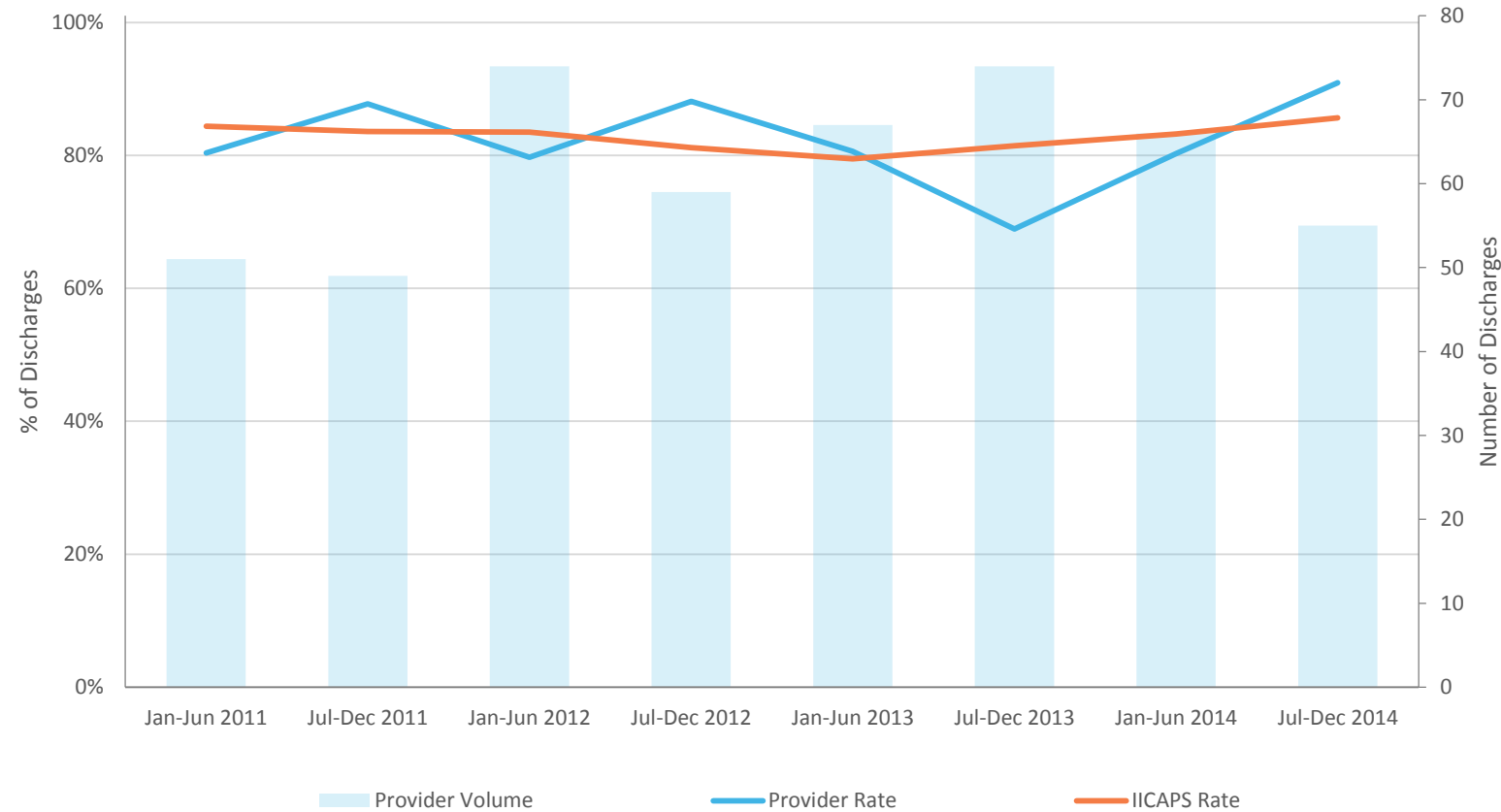
- Provide Individual and Aggregate Reports
- Work individually and regionally to improve performance
- No Immediate Plan for Incentives, Sanctions or Penalties
- Expect to see performance improve towards **Threshold** and **Benchmark**

Percent of Youth with a Psychotropic Prescription Filled within 45 Days of IICAPS Discharge  
CY 2014

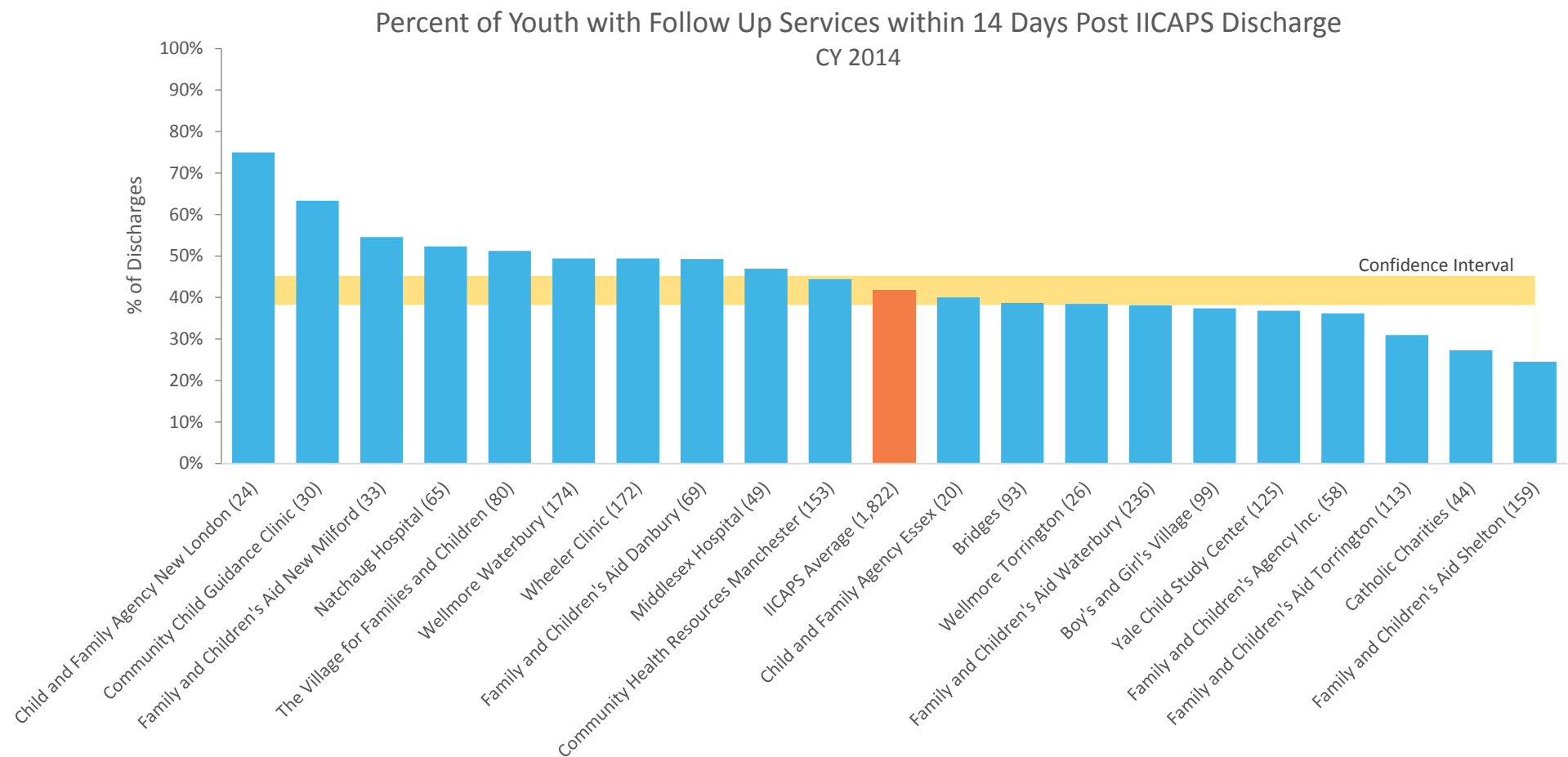


Number in parentheses represents the total number of youth with a psychotropic prescription filled in the 45 days prior to IICAPS discharge.

**PROVIDER EXAMPLE:** Percent of Youth with a Psychotropic Prescription Filled within 45 Days of IICAPS Discharge

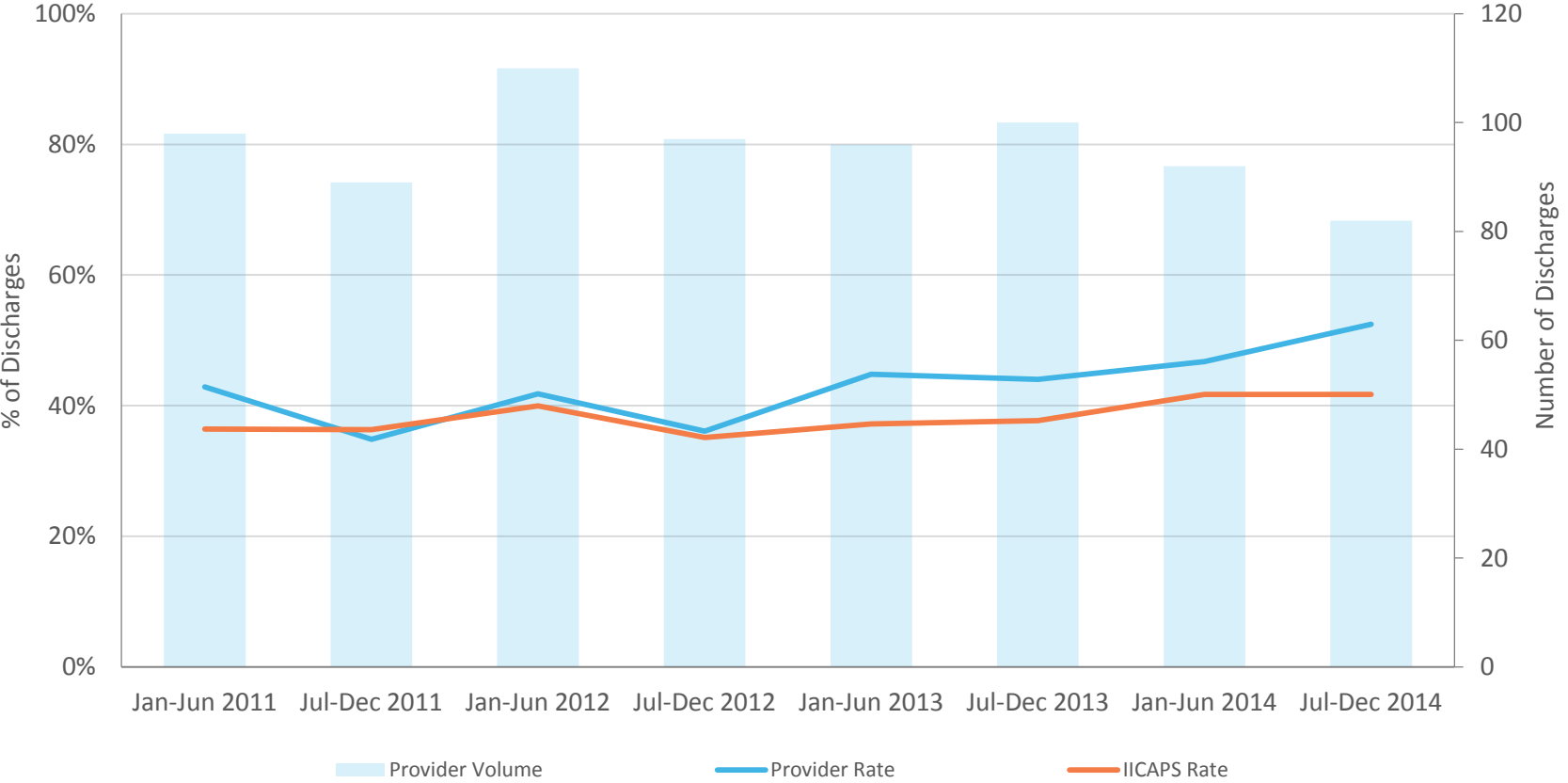


Volume represents the total number of youth discharged in the measurement period minus those who have admitted to a higher level of care within 45 days of IICAPS discharge.



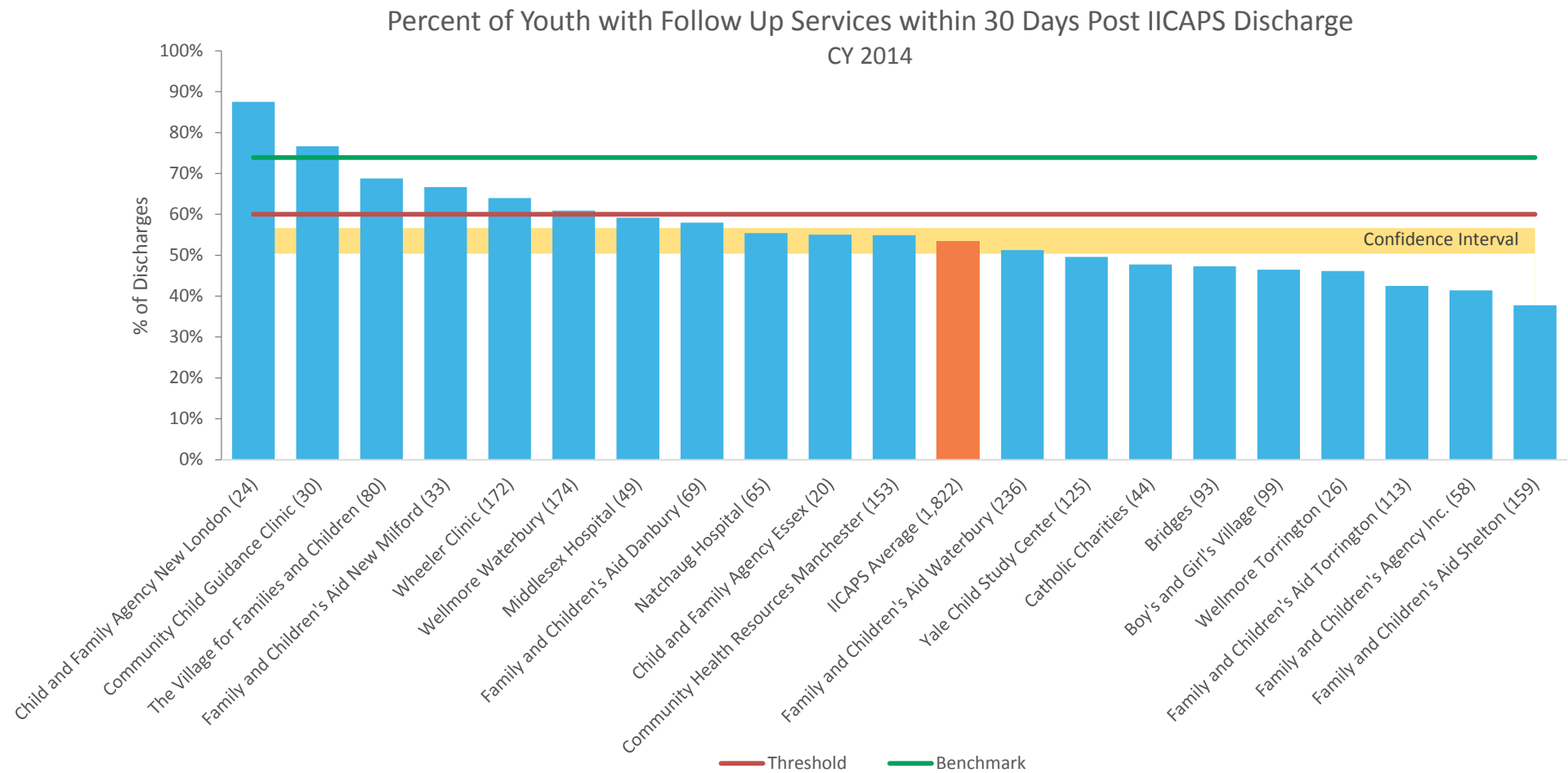
Number in parentheses represents the total number of youth discharged in the measurement period minus those who admitted to a higher level of care within 0 days of IICAPS discharge.

**PROVIDER EXAMPLE:** Percent of Youth with Follow Up Services within 14 Days Post Discharge

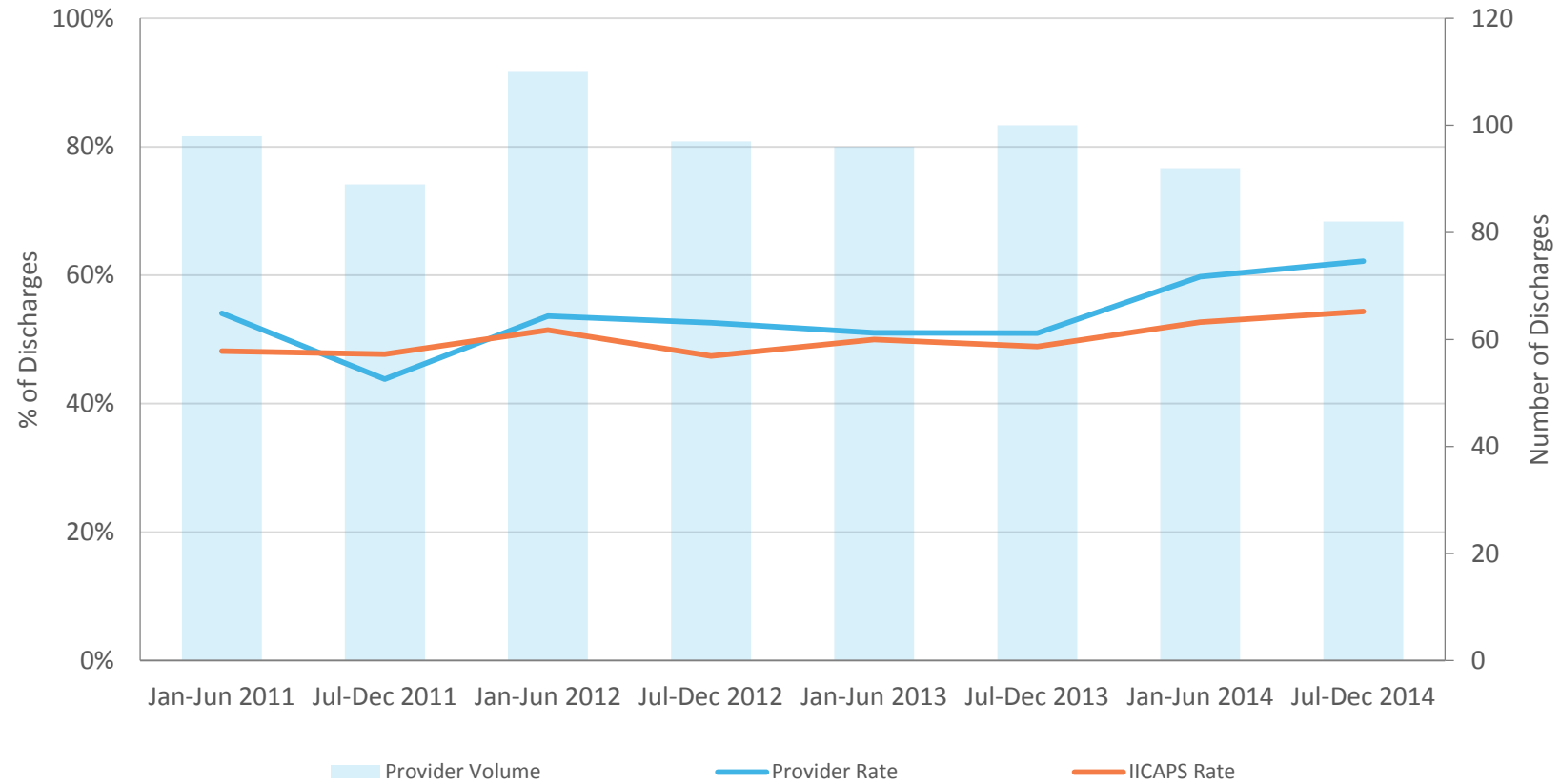


Volume represents the total number of youth discharged in the measurement period minus those who admitted to a higher level of care within 30 days of IICAPS discharge.

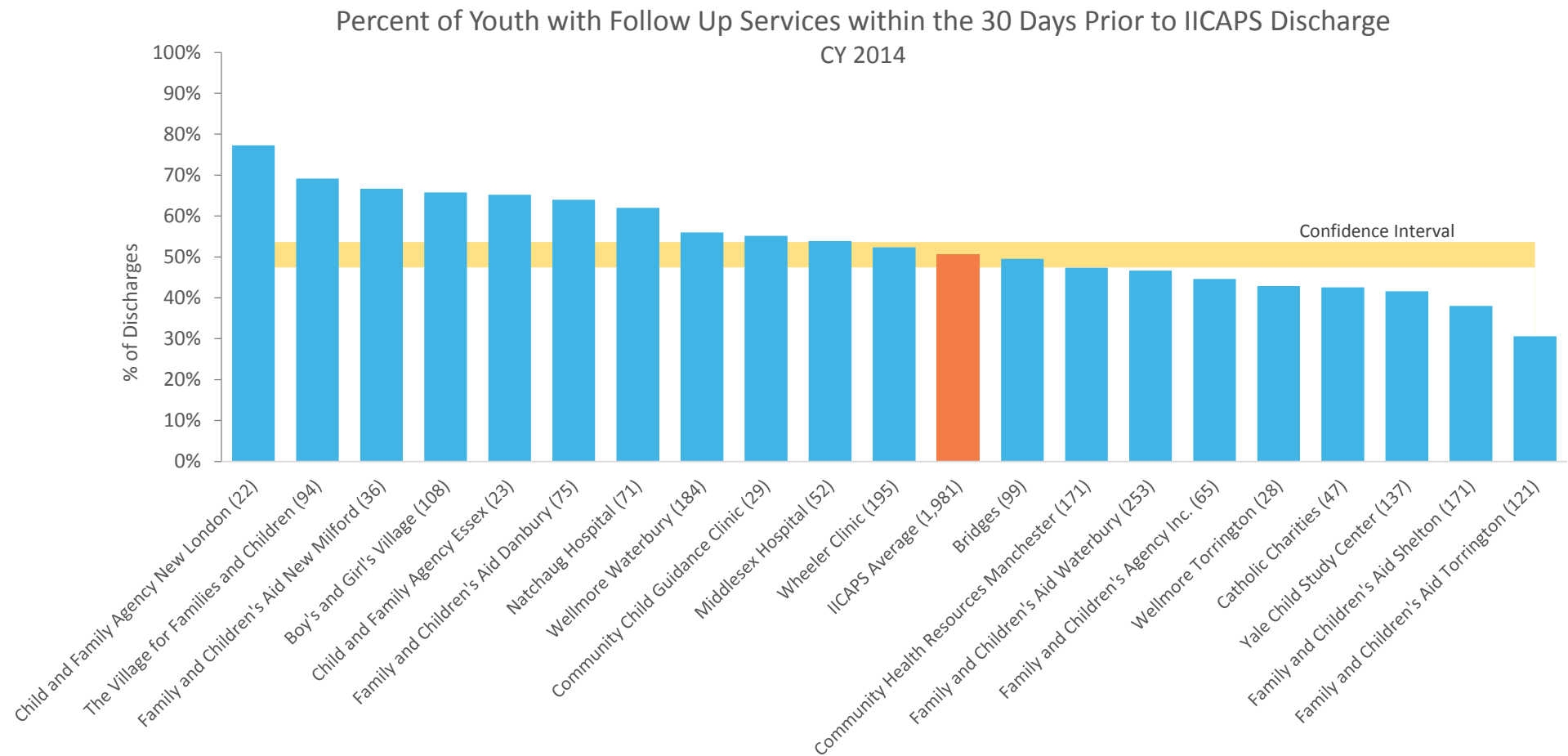




**PROVIDER EXAMPLE:** Percent of Youth with Follow Up Services within 30 Days Post Discharge



Volume represents the total number of youth discharged in the measurement period minus those who admitted to a higher level of care within 30 days of IICAPS discharge.



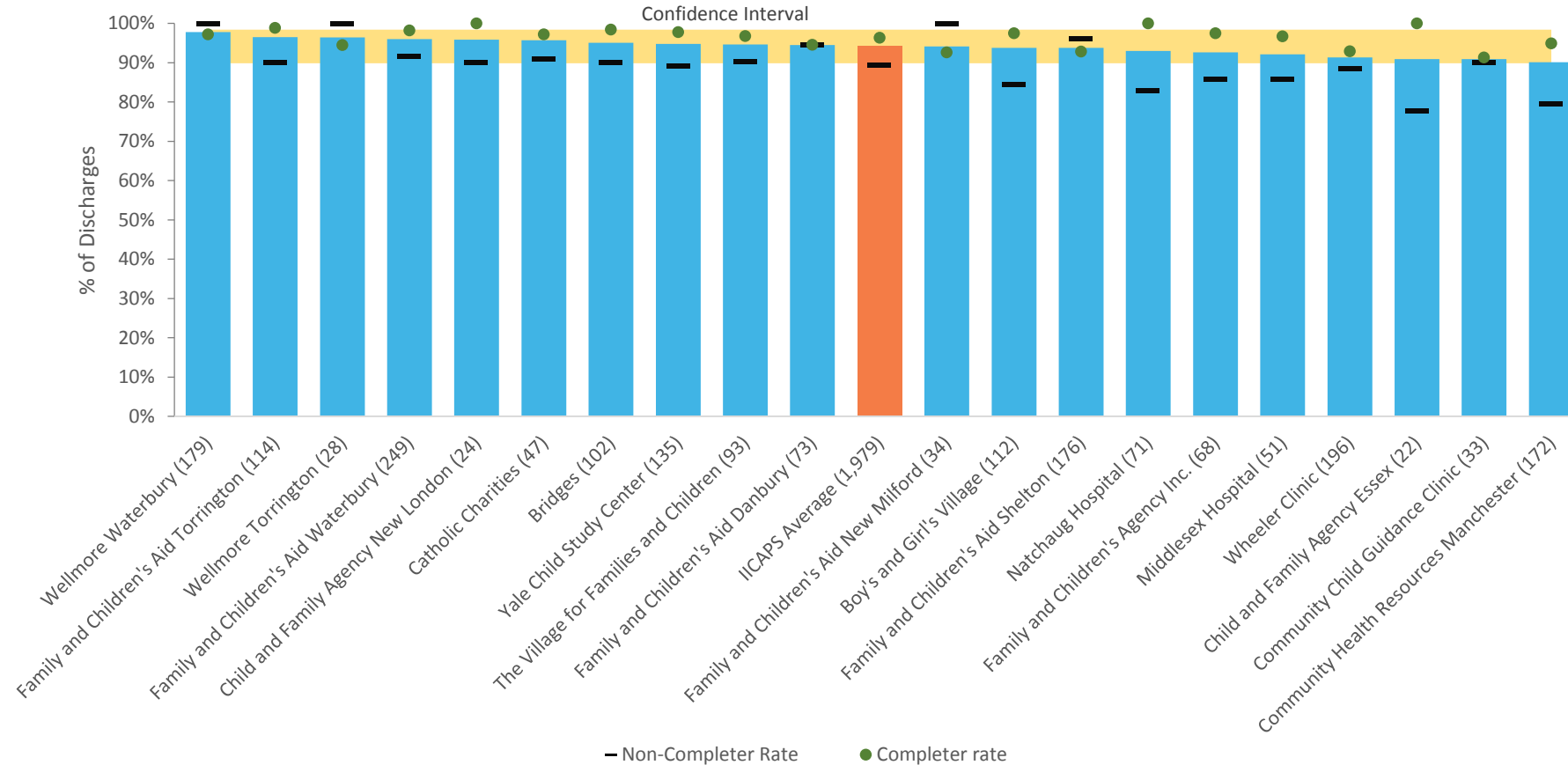
Number in parentheses represents the total number of youth discharged in the measurement period.

**IICAPS Connection to Care Rates Post IICAPS  
Discharge by DCF Region  
CY 2014**

<b>DCF Region</b>	<b>14 Day Rate</b>	<b>30 Day Rate</b>	<b>Discharges</b>
1	32%	42%	286
2	34%	45%	237
3	47%	55%	207
4	47%	62%	319
5	42%	55%	565
6	48%	61%	208
<b>IICAPS Total</b>	<b>42%</b>	<b>54%</b>	<b>1,822</b>

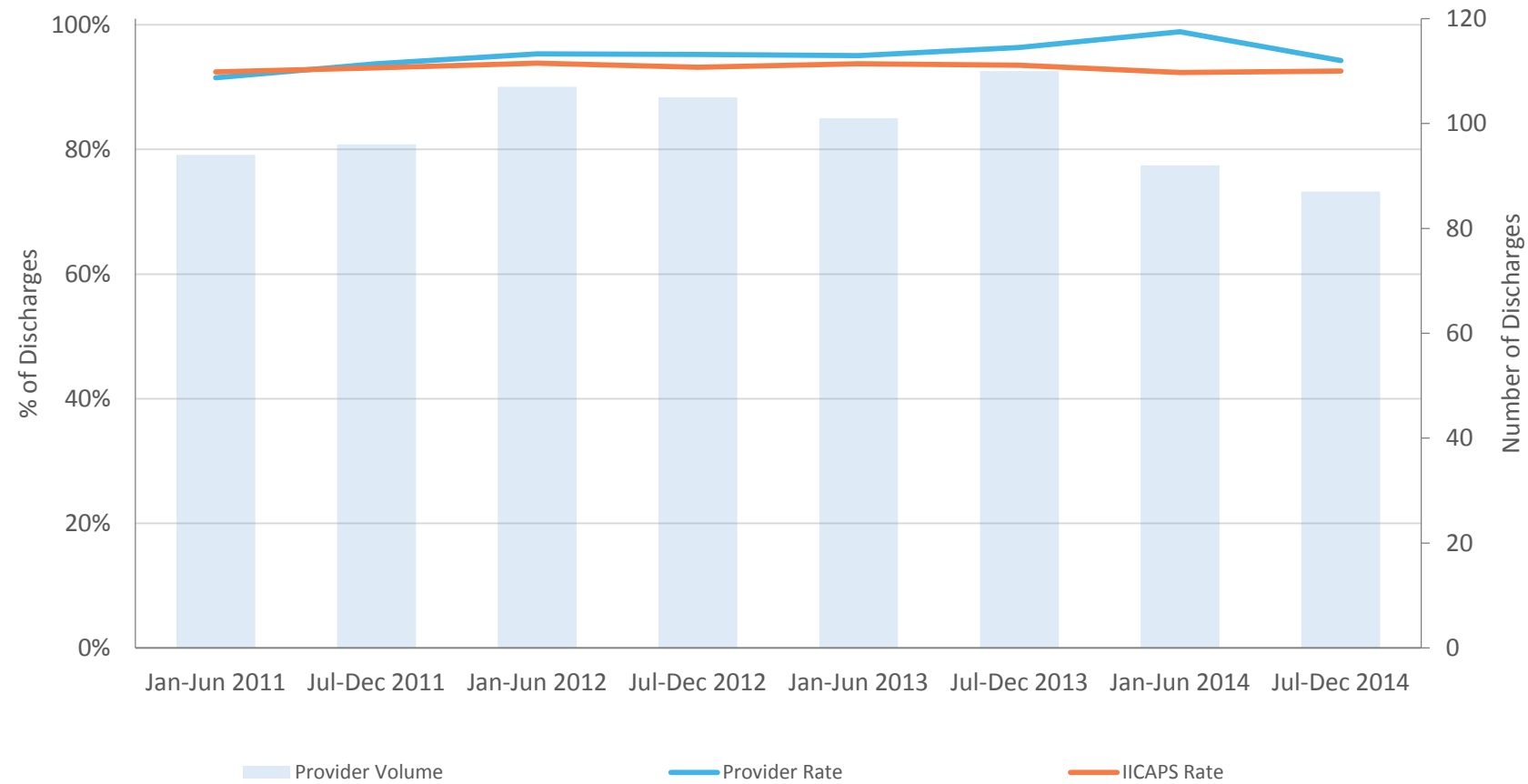
# Percent of Youth without Inpatient Admission within 60 Days of IICAPS Discharge

CY 2014



Number in parentheses represents the total number of youth discharged in the measurement period.

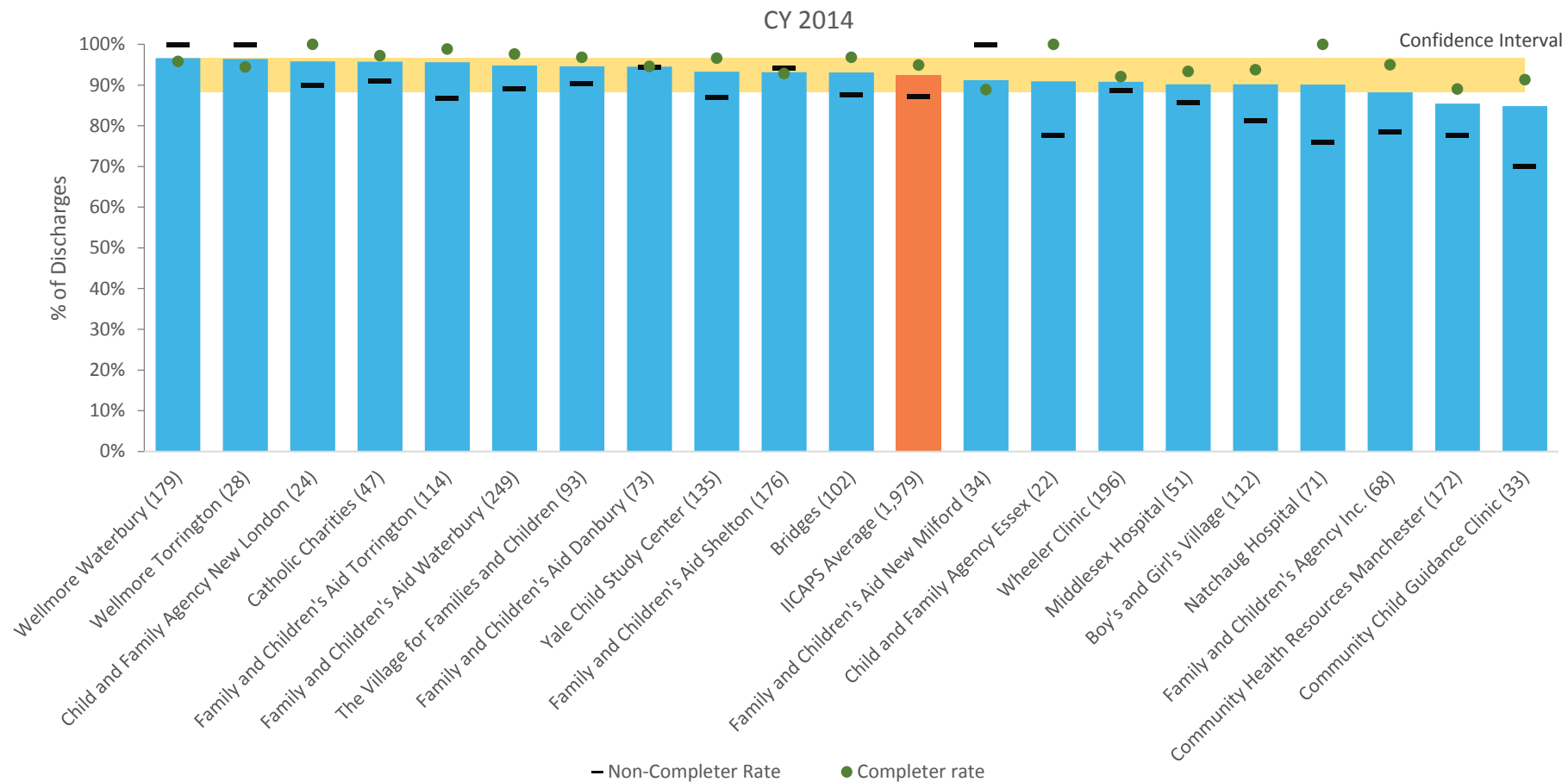
**PROVIDER EXAMPLE:** Percent of Youth **without** Inpatient Admission within 60 Days of IICAPS Discharge



Volume represents the total number of youth discharged in the measurement period.

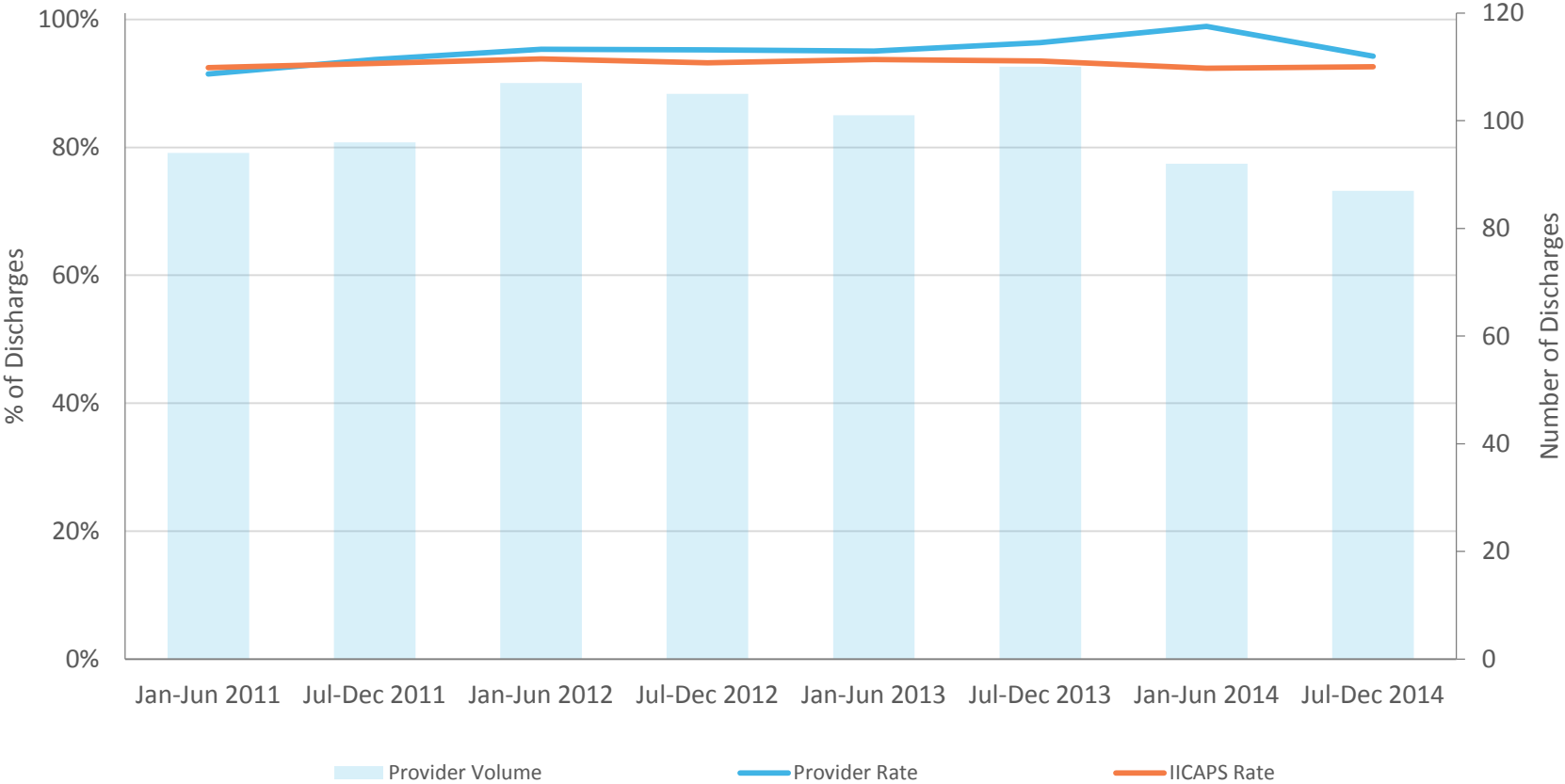
Percent of Youth without Inpatient Admission within 90 Days of IICAPS Discharge

CY 2014



Number in parentheses represents the total number of youth discharged in the measurement period.

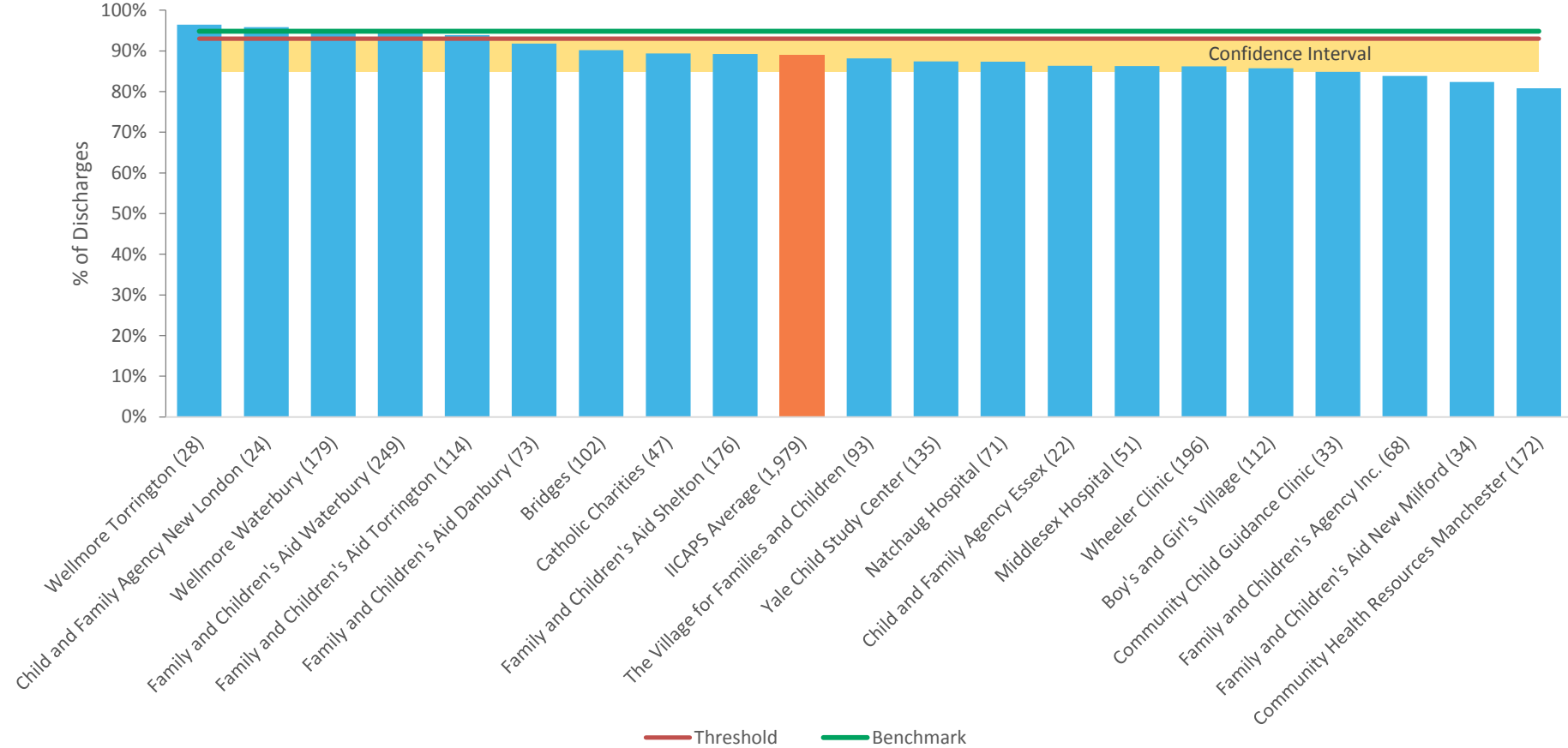
Percent of Youth without Inpatient Admission within 90 Days of IICAPS Discharge



Volume represents the total number of youth discharged in the measurement period.

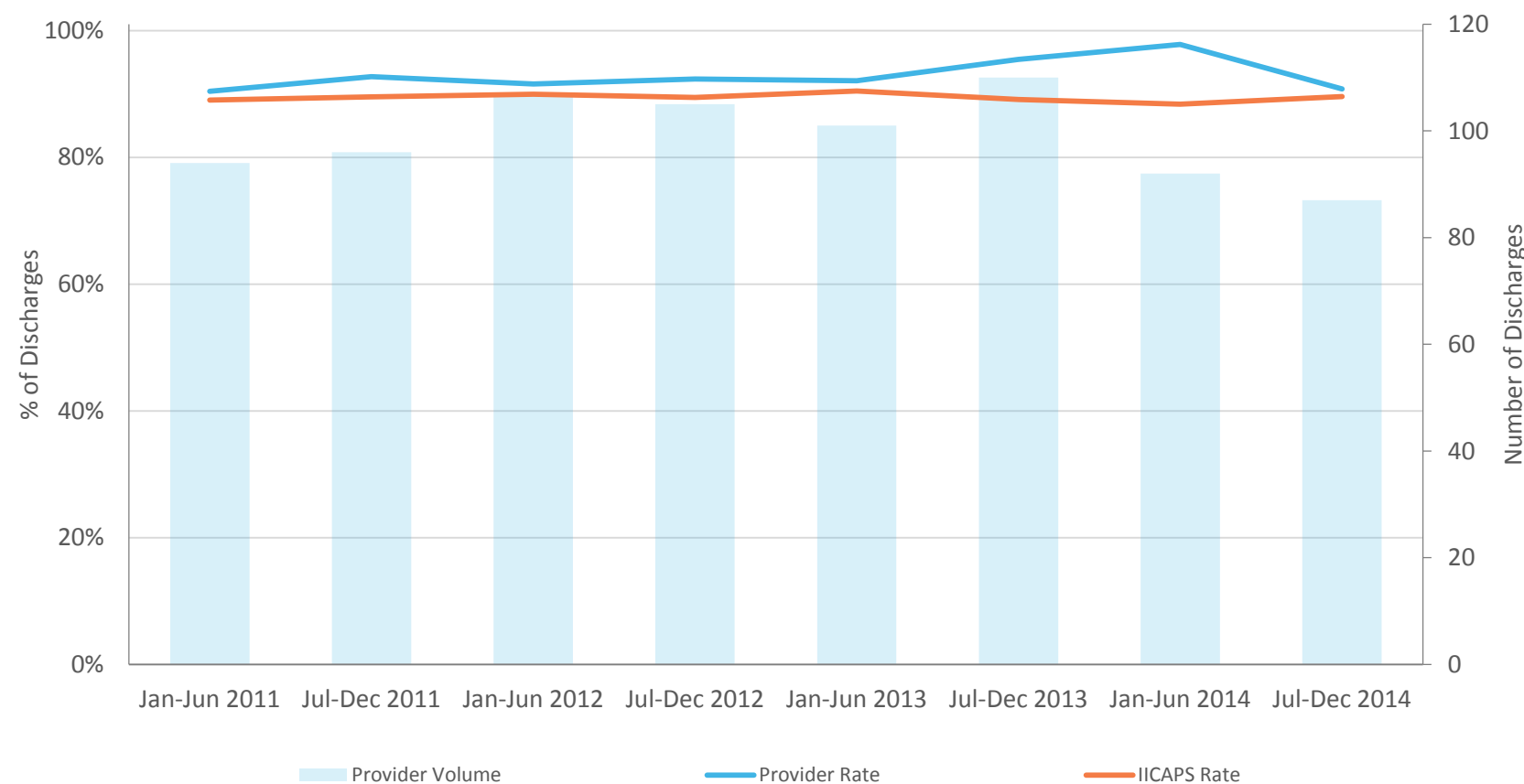


Percent of Youth without Inpatient Admission within 180 Days of IICAPS Discharge  
CY 2014



Number in parentheses represents the total number of youth discharged in the measurement period.

Percent of Youth without Inpatient Admission within 180 Days of IICAPS Discharge



Volume represents the total number of youth discharged in the measurement period.

# Next Steps

- Individual Agency Reports will be delivered During Regional Breakouts
- Break out into Regional Workgroups
- Work with regional colleagues, Beacon RNMs, and Yale to develop/implement strategies to reach or exceed thresholds
- Re-evaluate status in 6 months